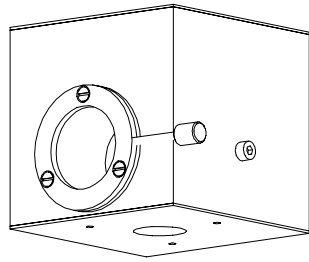
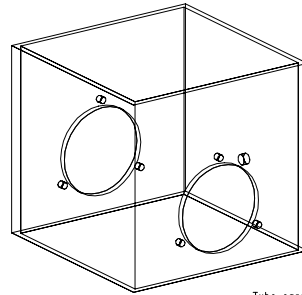


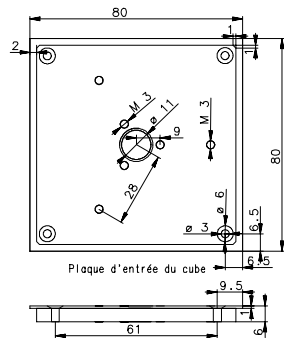
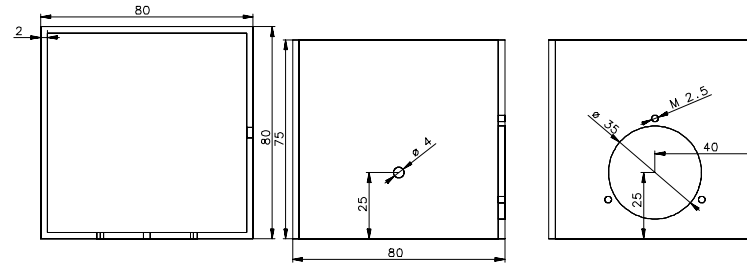
cube.ps : Cube de séparation de faisceau pour guidage



Le cube d'entrée

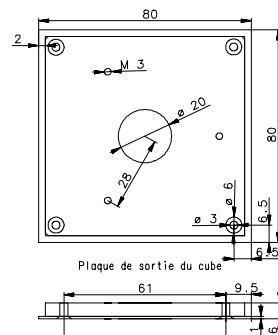


Tube carré 80x80x8 type corps d'Audine



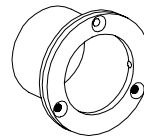
Plaque d'entrée du cube

Les deux plaques sont bloquées de part et d'autre du tube carré par entretoises et vis comme pour Audine

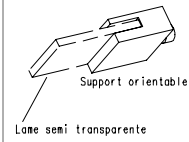
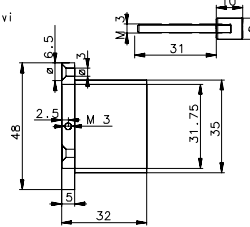
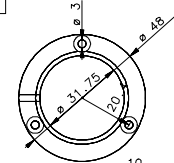


Plaque de sortie du cube

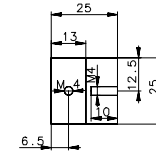
Coulants webcam et injection lumière lampe



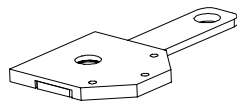
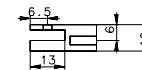
Tube support de webcam de suivi
pièce à faire en double



Support orientable
Lame semi transparente



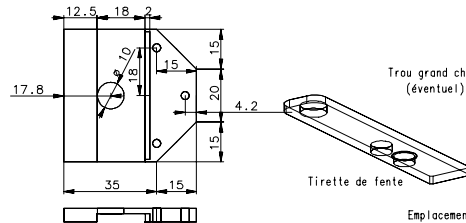
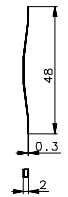
Support orientable



Support de fente



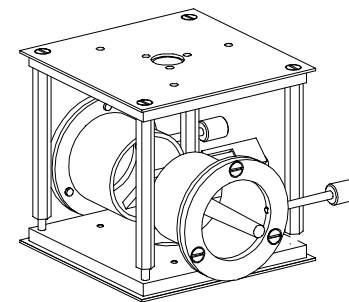
Lame ressort



Trou grand champ
(éventuel)

Tirette de fente

Emplacement de la fente



Ecorché du cube